



## Lighthouse Bulletin

### Summer Fun

The 150th anniversary of Pt. Porphyry was celebrated this season, with many visitors, volunteers, and guests in attendance. This year saw an increase in visitors renting out the light keepers' house and staying in the new Bell Tents on site. Additionally, the Lighthouse Carnival and Parks Canada's "Paint Superior" program were both successful. The membership continues to support the lighthouse's mandate to promote, preserve, and present history to the public. A total of 1,055 visitors arrived in 200 boats during the season, with half of those arriving by Archie's Fishing Charters taking advantage of the new information panel and lighthouse model.



### Content

Summer Fun  
Happy Anniversary  
Lighthouse Carnival  
Helping Hands  
Upcoming Events  
Christmas Cheer  
Donations  
Visitor Amenities  
In Memory of Deb Koivu

Mary Espinosa, an oil on canvas artist, showcased her work during a week-long residency at the Porphyry lighthouse site. Four other artists also provided visitors with the chance to learn from their work. Applications will open in February 2024

# Happy Anniversary



Hammarskjold High School woodworking class constructed a replica of the 1873 Pt. Porphyry Lighthouse, with hundreds of hours of volunteer labor and effort to build and transport it to the site for the 150th anniversary on July 1st. Provincial and Federal Parliament members were present to recognize the lighthouse's contribution to economic development and tourism potential and its role in the marine environment and Parks Canada's Lake Superior National Marine Conservation Area. It was a sunny day for this memorable occasion with many visitors.



## Lighthouse Carnival

The Lighthouse Carnival fundraiser was a success, with limited space for boaters to attend. Attendees enjoyed food, entertainment, historic tours, and the Scott Van Teeffelen Band's performance. Local power boaters volunteered their time to cook and educate visitors about Lake Superior. The event raised \$3,500 that supports lighthouse programs next season.

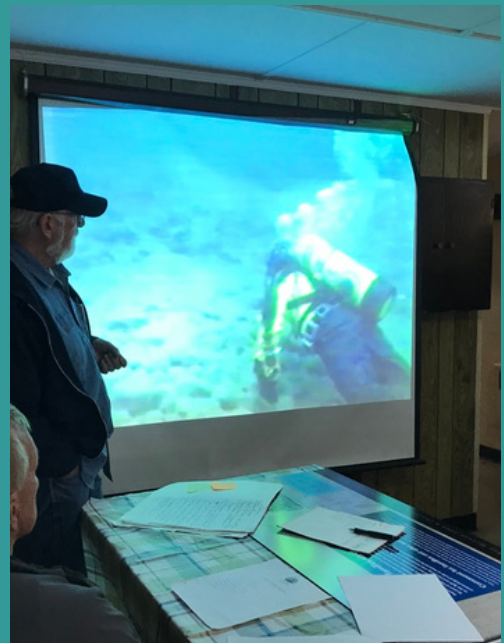


## Helping Hands

Canadian Lighthouses of Lake Superior received 2,099 hours of volunteer help during the summer, essential in light of the challenges faced by charities in the current economy. The organization is working to build a better website and has been surveying onsite volunteers to unify and solidify its approach to volunteer needs. Programming this summer included 18 Host Keepers and 4 Artists in Residence who worked hard to illuminate and educate visitors about the site's activities and attractions. Porphyry, Trowbridge, and No.10 Lights are now available to the public, thanks to the determination of volunteers. Interested individuals can become Host Keepers, Artists in Residence, part of the spring clean-up crew, facilitate a BINGO, or become a Board of Director by emailing the organization.

## Upcoming Events

The 2024 season will feature a Speakers Series in February and March, an annual fundraising dinner in April to celebrate 100 years of Trowbridge island lighthouse, an annual clean-up event for volunteers at Porphyry & Trowbridge, and the Lighthouse Carnival in the summer. Non-members can join by purchasing a \$20 membership if they wish, everyone is welcome to attend.



## Christmas Cheer!

As the snow approaches, consider giving memorable and thoughtful gifts like limited gift shop items and tour seats for next season. A day tour to Porphyry, including a delicious lunch, makes an unforgettable gift at \$120 per person. Renting the keepers dwelling at Porphyry is another option for those with their own vessel. Contact CLLS for more information and to give a loved one a gift of a lifetime.



## Donations



Canadian Lighthouses of Lake Superior received support from Thunder Bay Tug Services, Thunder Bay Port Authority, Lakehead Beer Company, and individuals who donated through CanadaHelps. These contributions help maintain the national nautical legacy and celebrate the 150th Anniversary. If interested in supporting CLLS's work, individuals and groups may donate through the CLLS website. Thanks to Nancy Post, Michael Comuzzie, Archie Hoogsteen, Lucy Keetch, Gordon Mackenzie & Nicole Beaudoin for their financial and in-kind support. Here's how you can donate.



## Visitor Amenities

This season, several organizations supported projects to connect visitors to Superior's lighthouses. Parks Canada funded a workboat purchase to sustain lighthouse programs, with additional amenities like picnic tables and an outhouse added to No.10 Lighthouse. The Great Lakes Cruising Foundation also provided support to enhance visitor experiences at Trowbridge Island Lighthouse.

---

## In Memory

The Board of Directors announces with sadness the sudden passing of Deb Koivu, a longtime member who started as the organization's secretary in 2015. Deb contributed significantly to the nonprofit by coordinating food pickups, editing visitors' information signs, and helping with administrative duties. Her kindness and thoughtfulness to others will always be remembered. Deb's passing leaves a huge gap in the board and among many lighthouse members who became her friend. Rest in Peace.

